

有关产品性质和适用范围的说明并不保证产品属性，仅作参考了解的信息。我们的供货范围及提供的服务完全以合同条款为准绳。技术数据和插图仅作为供货参考。保留更改权利。

Feature and scope of the product does not guarantee the product attributes, only for the information available. Our scope of delivery and services provided are based solely on the terms of the contract. Technical data and illustration are only for reference. We reserve the rights of changing.



中国华南制造基地

广东拓斯达科技股份有限公司

地址：广东省东莞市大岭山镇大塘朗村长塘路3号
电话：86-769-8305 0999
传真：86-769-8584 5562
邮箱：marketing@topstarltd.com

South China Manufacture Basis

GUANGDONG TOPSTAR TECHNOLOGY CO.,LTD
ADD:No. 3 Changtang Road, Datanglang Village, Dalingshan Town,
Dongguan City, Guangdong Province,China
TEL: 86-769-8305 0999
FAX: 86-769-8584 5562
E-mail:sales@topstarltd.com

江苏拓斯达机器人有限公司

地址：江苏省苏州市吴中经济开发区郭巷街道吴淞路818号1幢3楼
电话：0512-8686 4305

Jiangsu Topstar Robot Co.,Ltd

ADD: 3rd Floor, Building 1, No. 818, Wusong Road, Guoxiang Street,Wuzhong
Economic Development Zone, Suzhou City, Jiangsu Province, China
TEL: 0512-8686 4305

昆山拓斯达机器人科技有限公司

地址：江苏省昆山市新南路888号联邦国际商务花园18栋
电话：86-512-3688 1796
手机：185 0156 0757

Kunshan Topstar Robot Technology Co.,Ltd

ADD: Building 18, Federal International Business Garden, No. 888 Xinnan
Road, Kunshan City, Jiangsu Province, China
TEL: 86-512-3688 1796
MOB: 185 0156 0757

宁波拓晨机器人科技有限公司

地址：浙江省宁波市北仑区大 街道大塔路8号
电话：86-574- 8610 5571
传真：86-574- 8610 5571
手机：153 9428 5228

Ningbo Topstar Robot Technology Co.,Ltd

ADD: No.8 Great Tower Road, Daqi Street,Beilun Area,Ningbo City,
Zhejiang Province, China
TEL: 86-574-8610 5571 FAX: 86-574-8610 5571
MOB: 153 9428 5228

华中服务办事处

地址：湖北省武汉市经济开发区创业路嘉昱公馆302-305室
电话：186 7690 9270

Central China Service Offices,China

ADD: Room 302-305, Jiayu Mansion, Chuangye Road, Economic
Development Zone, Wuhan City, Hubei Province, China
TEL: 186 7690 9270

华北服务办事处

地址：天津市西青区海泰产业园区西南侧香海花园10-3
电话：022-8798 5589
手机：139 2586 4489

North China Service Offices,China

ADD: 10-3 Xianghai Garden, Southwest Side, Haitai Industrial Park, Xiqing
District, Tianjin,China
TEL: 022-8798 5589
MOB: 139 2586 4489

西南服务办事处

地址：重庆市渝北区融创中央广场7栋206室
手机：132 4051 2550

Southwest China Service Office, China

ADD: Room 206, Building 7, Rongchuang Central Plaza, Yubei District,
Chongqing, China
MOB: 132 4051 2550

全国统一客服热线/Domestic Service Hotline:

400-096-8005

[Http://www.topstarltd.com](http://www.topstarltd.com)

TS DQH2018-A

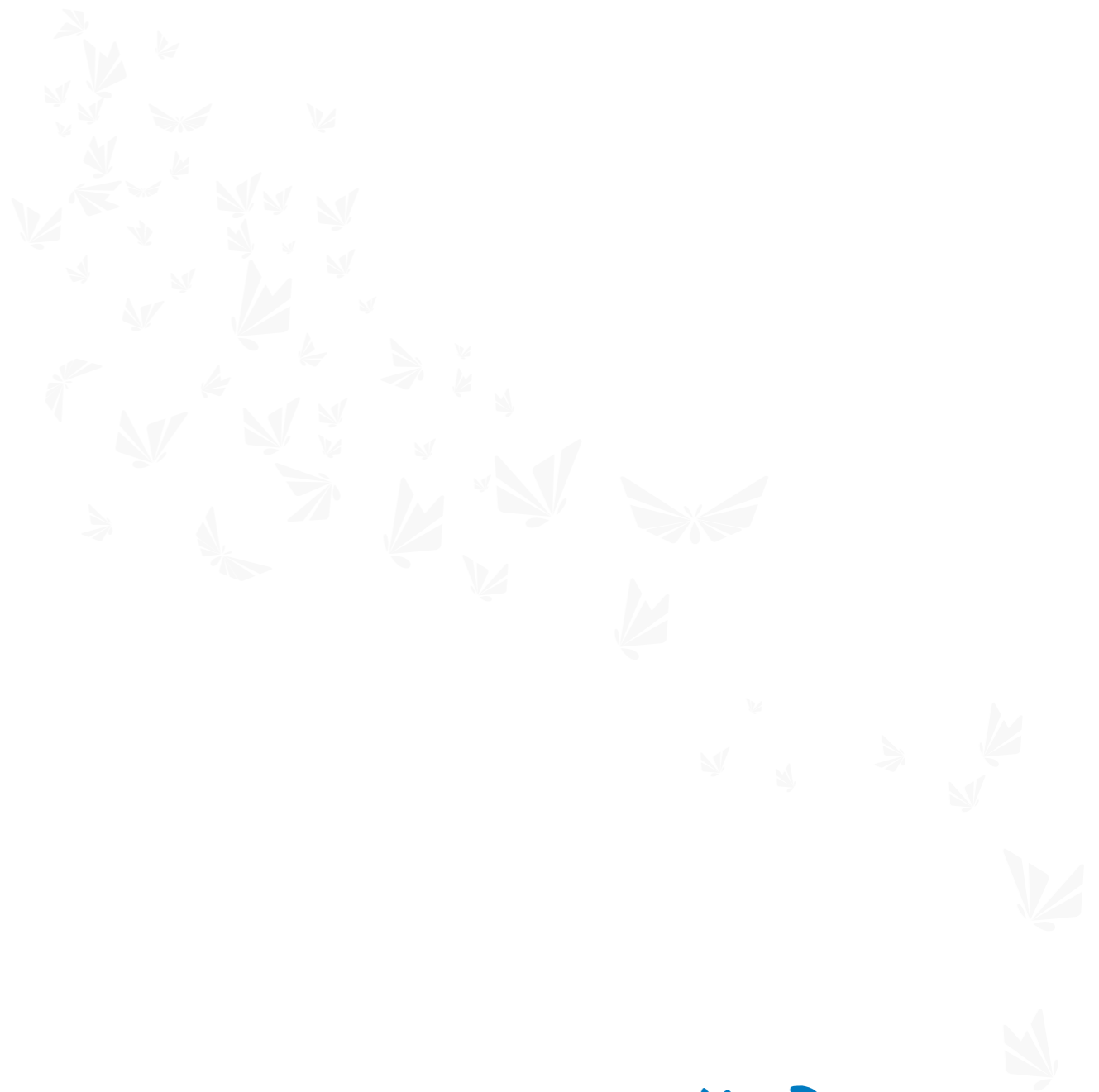
股票代码Stock Code:300607

拓斯达科技

TOPSTAR TECHNOLOGY



让工业制造更美好
Making Industrial Manufacturing Better



让工业制造更美好
making industrial
manufacturing better

目录 Contents

企业形象篇 Chapter of Corporate Identity	01
公司简介 Company profile	01
发展历程 Development History	02-03
企业文化 Company Culture	05
资质评定 Qualification evaluation	06
产品事业部篇 BU Products	02
工业机器人篇 Chapter of Industry Robot	07-14
注塑装备篇 Injection Molding Equipment.....	15-28
自动化篇 Automation Project	29-36
汽车饰件篇 Vehicle Accessories	37-40
绿能项目篇 Green Energy Project.....	41-52
客户服务篇 Chapter of Service	03
达云在线 DaYun online	54-55
售后服务 After-Sale Service	56-58
服务网点 Service Net	59

公司简介 Company profile

广东拓斯达科技股份有限公司(简称:拓斯达,股票代码:300607)是一家登陆创业板的广东省机器人骨干企业,专注于以工业机器人为代表的智能装备的研发、制造、销售,致力于成为系统集成+本体制造+软件开发+工业互联网四位一体的智能制造综合服务商。

拓斯达坚持“让工业制造更美好”的品牌主张,核心产品包括以工业机器人为代表的智能装备,以控制系统及MES为代表的工业物联网软件,为客户提供基于工业机器人的智能生产环境整体解决方案,打造健康的智能制造生态圈。

拓斯达在全国已有30多个办事处,5000余家已服务客户,包括比亚迪、长城汽车、伯恩光学等知名企业。

拓斯达长期与清华大学、华中科技大学、华南理工大学、等研究机构和知名高校开展产学研合作。截止2018年6月30日,公司已获得授权专利123项,各类软件著作权23项。广东名牌产品2个,广东高新技术产品5项,多项产品通过欧洲CE认证。

拓斯达是高新技术企业、广东省级企业技术中心,获评广东省高成长性中小企业。2014年,被《福布斯》杂志评为“中国非上市潜力企业百强”第30名;2015年,被国际四大会计师事务所之一安永联合复旦大学评为“中国最具潜力企业”;2016年,被评定为广东省机器人骨干企业;2017年,被怡佩克评为“2017年度中国十大系统集成商”;2014至2018年度获得高工金球奖等多项荣誉。

Guangdong Topstar Technology Co., Ltd. (Abbr. TOPSTAR, stock code: 300607) is the robot key enterprise listed on GEM in Guangdong province, focusing on the R&D, manufacturing and sale of the industrial robots as the representative of intelligent equipment, dedicated to system integration, product manufacturing, software development and industry internet -- four in one intelligent manufacturing integrated service provider.

TOPSTAR adheres to the brand advocate " Making industrial manufacturing better" . The core products include intelligent equipment represented by industrial robots, industrial internet software represented by control systems and MES, providing customers with turnkey solutions for intelligent production environment based on industrial robots and creating a healthy intelligent manufacturing ecosystem.

There are more than 30 sales and service branches all around the country, and serving for more than 5000 customers, including BYD Auto, CHANGCHENG Auto, BIEL, etc.

TOPSTAR has carried out long-term industry-university-research cooperation with tsinghua university, huazhong university of science and technology, south China university of technology, and other research institutions and well-known universities. By the end of June 30, 2018, the company has obtained 123 authorized patents and 23 software copyrights. 2 Guangdong famous brand products and 5 high-tech products in Guangdong. Many products have passed European CE certification.

TOPSTAR is a Hi-Tech enterprise, Guangdong Provincial-level Enterprise Technical Center and the Rapid Growth of Small & Medium Enterprises of Guangdong Province. In 2014, we were ranked on the 30th as "Potential 100 Non-Listed Chinese Enterprises" by Forbes. In 2015, we were assessed as "China's Most Potential Enterprise" by Ernst & Young with Fudan University. In 2016, TOPSTAR was assessed as the first batch of robot key enterprises in Guangdong Province. In 2017, TOPSTAR was named " China's top 10 system integrators of 2017" by Capex CN. 2014 to 2018, honored "Annual Golden Globe" by Golden Globe Awards.





发展历程 Development History

- 拓斯达以50万元注册资金注册成立；
- 提出“打造一流品质”的企业和产品定位；
- 制定行业内部标准，重新定义行业高端产品标准。

50万注册
成立拓斯达
2007

- 成立拓斯达商学院；
- 市场成交客户量突破千家；
- 成立钣金厂，提高自产率，产能再次提升。

提高产品自产
客户达1000家
2009

- 自主研发的三轴、五轴伺服机械手下线，获得客户广泛好评；
- 确立整体注塑自动化解决方案，提出主动服务理念；
- 成功举办“华南塑料工业高端论坛”。

注塑自动化解
决方案运营商
2011

- 投资6亿矿产自动化制造基地，项目纳入东莞市重点建设项目；
- 组建自动化项目部，布局打磨、冲压、压铸等多领域自动化进行股份制改革，核心员工持股。

引入战略投资
多领域自动化
2013

- 掌握控制系统核心技术，布局工业机器人研发；
- 形成多领域工业机器人自动化、整厂水电气系统、配套设备智能体系。

掌握核心技术
研发工业机器人
2015

- 创业板上市，股票代码300607
扩大员工持股200余名；
- 打造以工业机器人为核心，软硬件结合的智能制造综合服务体系，通过四部两院组织架构输出智能制造整体解决方案；
- 导入SAP信息化管理及任职资格体系，提升管理团队效能。

登陆创业板
扩大员工持股
2017

2008
研发辅机
开拓市场

- 研发出新型节能三机一体机；
- 研发出直接冷却160度水温机，降温速度更快。

2010
开发机械手
布局全国市场

- 开发机械手产品，成为自动化系统输出全套产业链运营商；
- 无锡分公司成立，辐射华东，开启全国市场布局；
- 与清华大学合作，引入先进的企业管理理念。

2012
认证高新企业
布局全球市场

- 获得国家高新技术企业称号；
- 布局全球市场，产品销售往东南亚、欧洲、南美洲等地市场；
- 与华南理工大学签署产学研合作协议。

2014
挂牌新三板
响应机器人

- 挂牌新三板，实现同步定增；
- 率先响应机器人政策，提出一年回本的自动化理念；
- 华北、华中营销中心成立，全国新设20余办事处，推动自动化改革。

2016
整合上下游资源
打造智能生态

- 自主研发六轴工业机器人本体上市；
- 提出打造软件研发、本体设计、集成方案、整厂自动化三位一体的机器人生态圈理念；
- 整合上下游资源，与ABB签订战略合作协议，深入开展合作。

2018
入驻新园区
赋新使命

- 发布新使命、愿景、价值观，确定新组织气质；
- 迁入全新的大塘朗园区，首次举办全球开放日；
- 优化产业布局，收购野田智能、筹建江苏拓斯达、置地松山湖与沙田。

未来/future
...



拓斯达不是雇佣和解雇型企业，而是打造创业型平台，集众人之力，实现凭一己之力所无法达成目标的平台，其核心精神是‘分享’。

——《拓斯达宣言》

TOPSTAR is not a hiring or dismissal enterprise, but aim to create a business platform, which setting the power of everyone to achieve the goal which can not achieve by their own. Its core spirit is 'Share'.

《TOPSTAR' S Declaration》

企业文化

|| 公司宗旨

全心全意为客户服务。

|| 公司愿景

助力100万工程师服务工业自动化；
助力100万家制造企业实现智能化。

|| 公司使命

让工业制造更美好。

|| 公司定位

专注建立工业机器人、自动化解决方案生态圈的全球智能制造综合服务商。

|| 核心价值观

群体奋斗 群体成功

|| 企业理念

共赢 / 分享 / 感恩

|| 企业精神

乐于拼搏，勇于进取

Company Culture

Company Purpose

Serve customers wholeheartedly.

Corporate Vision

Helping 1 million engineers service in industry automation;
Helping 1 million manufacturing companies to achieve intelligence.

Corporate Mission

Making industrial manufacturing better.

Corporate Positioning

Focus on the establishment of industrial robots, automated solutions for the ecological circle of intelligent manufacturing integrated service providers.

Core Values

Group struggle, group success

Corporate Philosophy

Win-win / Share / Gratitude

Entrepreneurial Spirit

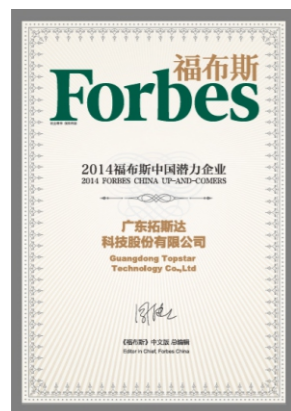
Be happy to struggle and bold to make progress.

资质评定 Qualification evaluation

拓斯达坚持技术为王的经营理念，先后取得了各项高新技术企业的资质和认证，为客户提供先进和高端的产品。
TOPSTAR adheres to the business philosophy, which puts technology in the dominant position. It has successively obtained many qualifications and certifications of high-tech enterprises, and provided the most advanced and high-end product to customers.



国家级高新技术企业认证
欧盟CE认证
ISO9001质量体系认证
广东省名牌机器人
广东省名牌机械手
机器人控制系统软件著作权5项
累计产品技术专利100项
广东省级企业技术中心
华南理工大学产学研合作基地
校企合作实践基地
.....



工业机器人篇 Chapter of Industry Robot

自主研发/根据客户需要定制
Independent R&D / Customized according to customer requirements



National high-tech enterprise certification
CE Certification
ISO9001 Quality System Certification
Guangdong Province Top Brand Robot
Guangdong Province Top Brand Manipulator

Five kinds of copyright in software of Robot control system
100 technology patents for products
Guangdong provincial enterprise technology center
South China University of Technology production and research cooperation base
School-enterprise cooperation practice base

拓斯达工业机器人 Topstar Industrial Robot



拓斯达凭借研发为王的理念，深耕机器人行业，经过多年沉淀，目前已经成功开发出六轴机器人，四轴scara机器人，Delta蜘蛛手机器人，AGV移动机器人并实现批量上市，满足各种自动化应用场景需求。

With the concept of R&D as the king, Topstar has deeply cultivated the robot industry. After years of precipitation, it has successfully developed six-axis robots, four-axis scara robots, Delta spider robots, AGV mobile robots and launched in batches to meet various automation applications. Scene requirements.

六轴多关节机器人 6-Axis Multi-joint Robot



四轴scara机器人
4-axis Scara Robot



Delta机器人
Delta Robot



标准产品

集成方案

整厂解决方案



标准产品

集成方案

整厂解决方案



AGV移动机器人
AGV Mobile Robot



应用案例 Application Case



标准产品

集成方案

整厂解决方案

标准产品

集成方案

整厂解决方案



拓斯达&ABB开展全方位战略合作 Topstar and ABB carry out all-around strategic cooperation

- 2016年4月28日上午，拓斯达与机器人四大国际巨头之一的ABB，举行战略合作协议签约仪式。
On the morning of April 28, 2016, Topstar and ABB, one of the four major international robot giants, held a signing ceremony for strategic cooperation agreement.



- 2017年6月27-28日，在ABB机器人亚洲价值提供商大会上，拓斯达获得“最具创新奖”。
On June 27 and 28, 2017, at the ABB robot Asia value provider conference, Topstar won the "Most Innovative Award".



- 2017年9月6日，ABB机器人与应用业务全球负责人Joni Rautavuori，ABB机器人与应用业务中国区负责人梁锐及相关高管等一行到访拓斯达。
On September 6, 2017, Joni Rautavuori, head of ABB robot and application global business, and Raymond, head of ABB robot and application China business with senior executives visited Topstar.



注塑装备篇

Injection Molding Equipment

自主研发/根据客户需求定制

Independent R&D / customized according to customer requirements

机械手选型导引 | Model Selection Guide

驱动方式 / Drive	锁模力/Mold Clamping Force (Ton)																		
	小型/Small-sized I.m.m					中型/Middle-sized I.M.M					大型/Large-sized I.M.M								
	0	30	80	100	150	180	220	350	450	550	850	1000	1300	1600	2000	3000	4000		
3/5轴伺服 3/5 Axis AC Servo																	MBW-200		
																		MBW-170	
																		MBW-130	
																		MEW-170 MEW-170s	
																		EU-120 EU-120s	
																		EUW-120 EUW-120s	
																		EU-80 EU-80s	
																		EUW-80 EUW-80s	
																		EU-50 EU-50s	
																			MDE-120 MDE-120s
																			MEWE-120 MEWE-120s
	3轴伺服& 气缸 3 Axis AC Servo & Air Cylinder																		MDW-110 MDW-110s
																		MDE-80 MDE-80s	
																		MEWE-80 MEWE-80s	
																		HDW-80	
																		AD-80 AD-80s	
单轴伺服气缸 Single AC Servo Air Cylinder																		ADW-80 ADW-80s	
																		L-650[V] X-650[V]	
旋转式机械手 Swing-Arm Robots																			

系统一览 List of systems



MA2-TP 控制器
MA2-TP Controller



界面显示
Interface Display



单轴机械手按键控制器
Key controller of Single Axis Robot



三/五轴机械手按键控制器
Key controller of three/five Axis Robot

控制器特点 The feature of the controller

采用7.5寸液晶显示屏 7.5-inch color LCD	画面大，易操作。 Big screen, easy operation.
步进动作 Stepping Operation	使用步进操作，机械手一步一步实施被设定好的动作，可确认机械手的设定条件。 Stepping operation causes the servo robot to execute the currently set operation step by step, allowing you to check the setting conditions of the servo robot.
内置2种控制系统 2 control systems	固定式标准系统，使用简单方便；开放式用户系统，NC程序的设定功能。 Fixed standard system: easy to use; Open user system: NC program setting function.
加速.减速重量调整 Adjust the weight and speed	根据负载的重量，可以在操作盒执行设备的加速，减速调整 Can adjust the speed in the operation box according to the weight.

横走式单轴伺服机械手 Single Axis Servo Driven Robot



产品特点 Product Features

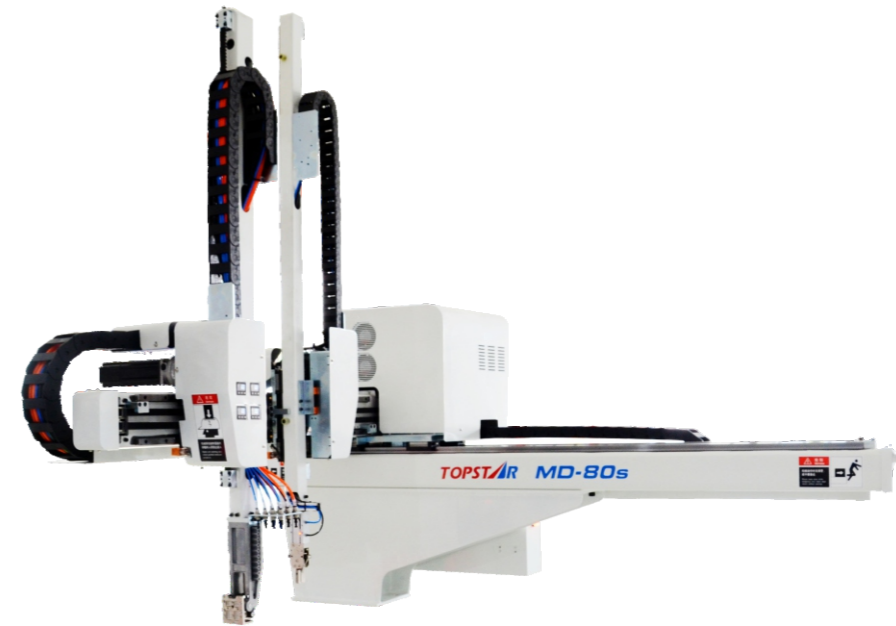
适用于50~550吨的各型卧式射出成型机的成品及水口取出。手臂型式有单截式及双截式,单截式上下行程为600/800/900mm,双截式上下行程为600/800/900/1000/1200/1600mm。横走机构采用AC伺服马达驱动,手臂采用铝型材结构,易调整、稳定。模内快速下降取物,模外慢速下降置物,具“快拿轻放”动作功能,针对不同产品搭配各类治具,实现稳定、完美的取出动作。

Single axis servo driven robots are suitable to be applied to take out the finished products and sprue for different type of horizontal injection molding machine from 50T to 550T. The arm type of single axis servo driven robots are with single-stage and telescopic, single-stage arm has stroke with 600/800/900mm, telescopic arm has stroke with 600/800/900/1000/1200/1600mm. Horizontal moving mechanism is driven by AC servo motor, the arms are made of aluminum profile structure, with a performance of stable and adjustment easily. It has an action function of "taking-out rapidly and putting down gently", which means descending to take the product rapidly in the mould, and putting down the product in a slow speed outside the mould, it can be equipped with different jigs according to different products to achieve the stable and perfect taking-out action.

应用案例 Application Case



横走式三轴/五轴伺服机械手 3/5 Axis AC Servo Driven Robots



产品特点 Product Features

适用于75~1300吨的各型卧式射出成型机,应用于外观及精度要求较高的成品及水口取出,手臂型式有单截式及双截式,单截式上下行程为600/800/900mm,双截式上下行程为900/1100/1500/1700mm。三轴(走行/前后/主臂)/五轴(走行/前后2个主臂/副臂)驱动使用高性能的AC伺服马达驱动,具备超高速的取出时间,高刚性滑轨传动,搭配开放式伺服定位控制系统,实现高精度取出。

Three / Five Axis AC Servo Driven Robots are extensively suitable for horizontal injection molding machine from 75T to 1300T, being applied to take-out of finished products and sprues, which has higher requirements on appearance and precision. The types of arm are with single-stage and telescopic, the vertical stroke of single stage arm are 600/800/900mm, and 900/1100/1500/1700mm for telescopic. Three axis (traverse/crosswise/main arm) / Five axis (traverse/crosswise/vertical main arm/vertical sub-arm) robots are driven by high performance AC servo motor, which is with a good performance of high speed take-out, moving based on high rigidity slideway, and equipped with open style servo location controlling system to achieve the performance of high precision take-out.

应用案例 Application Case



牛头式机械手 Big Size Robot



产品特点 Product Features

适用于1500-4000吨的大型注塑机，为3轴AC伺服驱动，单臂牛头型式，上下手臂结构为双截式；上下行程1500/1700/2000/2500mm/3000mm，横行行程2500/3000/3500mm，前后行程1500mm/1800mm，取出时间7-9s，全循环时间21-26s，标准荷重30公斤，重负载50公斤（含成品与治具）。应用于快速取出或是多样的取出应用，特别是长形状的重型产品如汽车保险杠、门饰条、大型家电外壳等。

汽车饰件篇

Suitable for horizontal injection molding machine from 1500T to 4000T. They are driven by three axis AC servo motor, the up-down arm structure is by single arm in telescopic type, its stroke is with 1500/1700/2000/2500/3000mm, traverse is 2500/3000/3500mm, crosswise stroke is 1500/1800mm, the take-out time is 7-9s, the dry cycle time is 21-26s, the standard payload is 30kg, and max. payload is 50kg (including product and jig). Being applied to high speed and different type of take-out, especially for heavy products in a long shape, such as bumper, door trim, shell of big size home appliance etc.

应用案例 Application Case



EUW80系机械手 EUW80 Series Robot

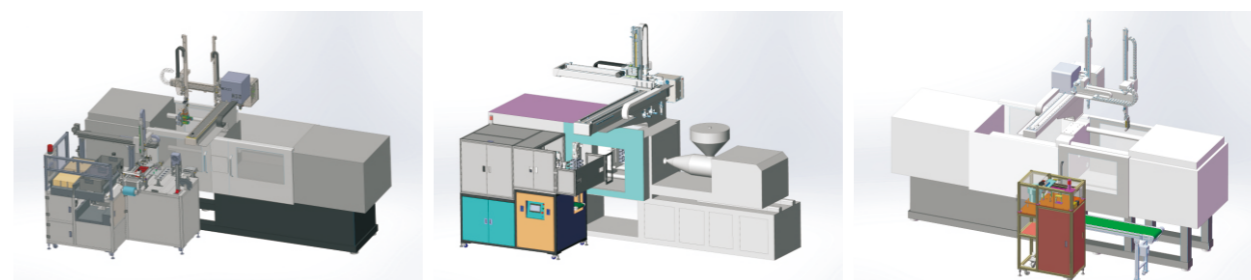


产品特点 Product Features

EUW80系为全新开发的高速、高精、高刚性的全伺服注塑用线性机械手。

EUW80 Series are the latest developed full servo driven linear robots for injection molding machines, with features of high speed, high precision and high rigidity.

应用范围 Application



除湿干燥机系统 Drying and Dehumidifying System



TDN氮气三机一体
TDN series nitrogen dehumidifying dryers

- ◆ 高浓度氮气充满原材料，98%以上，成型合格率提高。
Be full of high concentration nitrogen, above 98%, improve the qualified of molding.
- ◆ 原料为全封闭结构，不受外界环境影响。
Material in whole sealing, not suffer from external environment.
- ◆ 延长成型机螺杆碳化时间，减少设备的维护成本。
Delaying carbonization time of make-up machine screw, reduce maintenance cost of machine.
- ◆ 封闭循环式氮气输送
Delivery nitrogen in close system..
- ◆ 超低能耗
Ultralow energy consumption.
- ◆ 多重保护装置
Multiple protect equipment.

同系列机型 The same series models

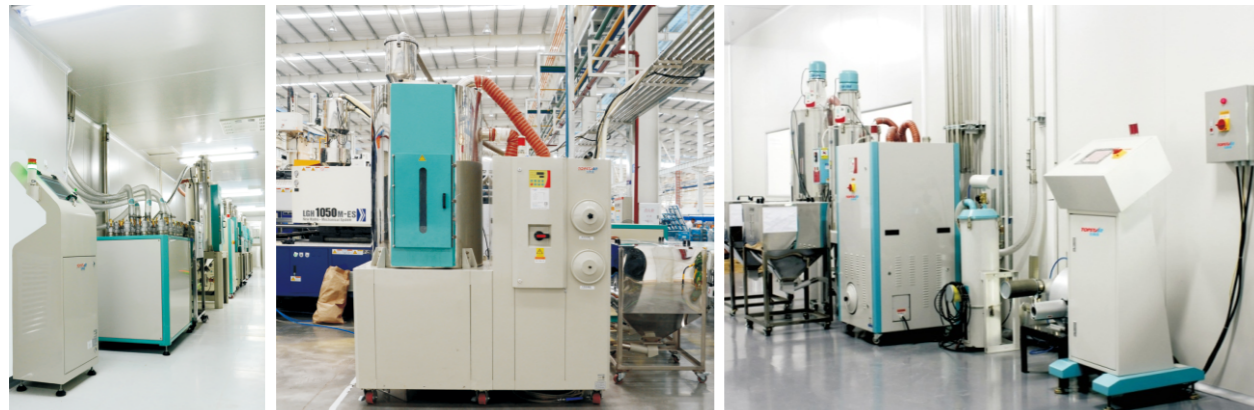


THD系列不锈钢干燥机
THD Series Stainless Hopper Dryers

TDH系列蜂巢式转轮除湿机
TDH Series Honeycomb Rotor Dehumidifiers

TDA、TDB双筒式三机一体
TDA, TDB Double hopper 3 in 1 compact dehumidifying dryer

应用案例 Application Case



自动送料系统 Feeding and Conveying System



TAL系列分离式吸料主机
TAL Series Detachable Autoloaders

- ◆ 主机与料斗采用分离式的设计。
The main controllers and material hopper receivers are designed separately.
- ◆ 可搭配2个以上的料斗，一对多输送。
Can match 2 or above 2 hopper receivers to achieve one to multi combination conveying.
- ◆ 原料输送能力达每小时700公斤。
Material conveying capacities can be up to 700kgs/hr.
- ◆ 最高扬程可达10米，适用于长距离原料输送。
The maximum loading distance can be 10m, suitable for conveying materials over long distance.

同系列机型 The same series models



TAL系列直接式吸料机
TAL Series Single Autoloaders

料杯
Hopper Receivers

粉体吸料机TALP
TALP Power Loader

应用案例 Application Case



模温控制系统 Mold Temperature Control System



TTW系列水式模温机
TTW Series Water Type Mold Temperature Controllers

- ◆使用水为传热媒介，以直接（标准型）或间接冷却（高温型）方式达到热交换。
Using water as heating media to realize heat exchange by direct cooling (standard type) or indirect cooling (high temperature type).
- ◆具有热传导效率高，污染少，水资源容易取得，使用成本低等优点。
With the advantages of high efficient heat transmission, less pollution, water resource easy to be attained with low cost.
- ◆标准型温度控制达120~160℃。
The control temperature of standard type can be 120~160℃.

冷却单元的冷却器结构获得实用新型专利 Practical New Patent for structure of cooler
专利号/Patent No: ZL 201120245120.X

自动冷却系统 Cooling System



TCA系列风冷式冰水机
TCA Series Air Chillers

- ◆风冷式采用翅片式冷凝器，导热快，散热效果佳，无需提供冷却水。
Air Cooling Chillers adopt fin condensers (without need of cooling water) with the features of rapid heat transmission and excellent heat dispersion.
- ◆可提供5~35℃，低温型更可低至3℃的冰水(温差不超过±1℃)。
Can be afforded cooling ranges from 5~35℃, even lower to 3℃ (temperature controlled accuracy at ±1℃).
- ◆压缩机功率从3HP~50HP。
The compressors' power range from 3HP~50HP.
- ◆制冷量能力可达7800~128570 Kcal/hr。
The cooling capacities range from 7800~ 128570 Kcal/hr.

同系列机型 The same series models



TCW系列水冷式冰水机
TCW Series Water Chillers



水冷壳管式冰水机
Water Chillers (Open type)

应用案例 Application Case



同系列机型 The same series models



双温油式模温机
Dual-purpose oil type mold temperature controller

TTO系列油式模温机
TTO Series Oil Type Mold Temperature Controllers



TTR系列速冷速热高光模温机
TTR Series Rapid Heat and Cool Temperature Controller

应用案例/ Application Case



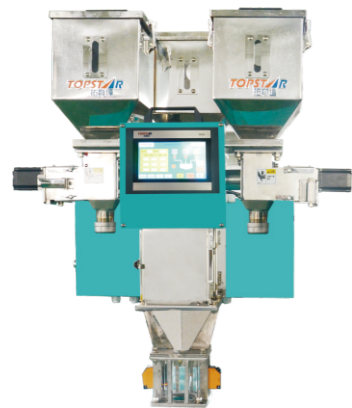
计量混合系统 Dosing & Mixing System



TSM系列色母机
TSM Series Screw Dosers

- ◆适用于新、次料、色母或添加剂等的自动比例混合。
Extensively used for precise auto-proportional dosing & blending of virgin, regrind materials, master batch and other various additives.
- ◆计量精准，其误差值±0.1%。
High precise metering with an accuracy of ±0.1%.
- ◆螺杆直径分为16、20、25等多种，提供0.1~200kgs/hr的不同输出量供客户选择。
The dosing screws are offered with various dia. size: 16, 20 and 25 for developing diverse models with output from 0.1~200kgs/hr.
- ◆具备两种模式，适用于塑胶的注塑成型和挤出成型。
Can be in the different applications for injection molding machines and extruders.

同系列机型 The same series models



TMA-103体积式计量机
TMA-103 Volumetric Blender



TGB称重式计量机
TGB Series Gravimetric Blenders



混合比例料箱TMT
TMT Mix Tank

应用案例 Application Case



粉碎回收系统 Granulating & Recycling System



慢速静音粉碎机TGL系列
TGL Series Low Speed Sound-Proof Granulators

- ◆属于无筛网型塑胶回收粉碎机。
Belongs to non-mesh plastic recycling granulators.
- ◆具有转速低，扭矩大，噪音低，产生粉尘少，操作简便的优点。
With the advantages of low speed, high torque, low noise, less powder and easy operation.
- ◆具备产品粉碎颗粒均匀，粉碎效果极佳，设备运转中无过热现象，使用寿命长等特点。
With the characteristics of granulating in even, no-overheating in operation and long service life.
- ◆尤其适合粉碎回收PC、尼龙、ABS等硬质水口料。
Specially for crushing the rigid and fragile plastics, such as PC, nylon, ABS and so on.

同系列机型 The same series models



强力型粉碎机TGP系列
TGP Series Powerful Granulators



强力静音粉碎机TGP系列
TGP Series Powerful Sound-Proof Granulators



中速粉碎机TGM系列
TGM Series Middle Speed Granulators

应用案例 Application Case

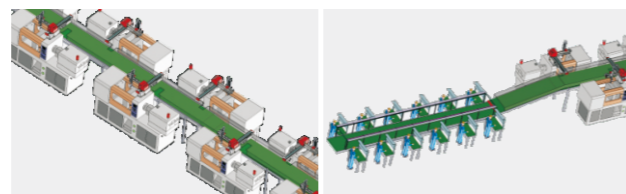


输送带 Belt Conveyor



产品特点 Product Features

- ◆PVC输送带，可有效保护产品外貌。
- ◆速度可自由调整，可调节速度0~6m/min，操作简单，使用方便。
- ◆采用万向脚轮配合煞车脚轮，固定与移动方便。
- ◆可外接外部信号，配合机械手实现自动化，也可独立工作。
- ◆TBA与TBL系列铝合金可调支架，机械高度可以根据需要在一定范围内调整。
- ◆可以根据客户特殊要求，订作尺寸。



- ◆PVC belt conveyors can protect product good appearance effectively.
- ◆The speed of belt conveyor is adjustable from 0~6m/min, which is with simple operation and convenient to use.
- ◆Belt Conveyors equipped with swivel caster matching with brake caster to make it stable and moving conveniently.
- ◆Belt Conveyors can be connected with external signal to match with the robot arms to achieve automation, or working individually.
- ◆TBA and TBL series are with adjustable aluminum alloy support, the height of belt conveyor can be adjusted in a specific range.

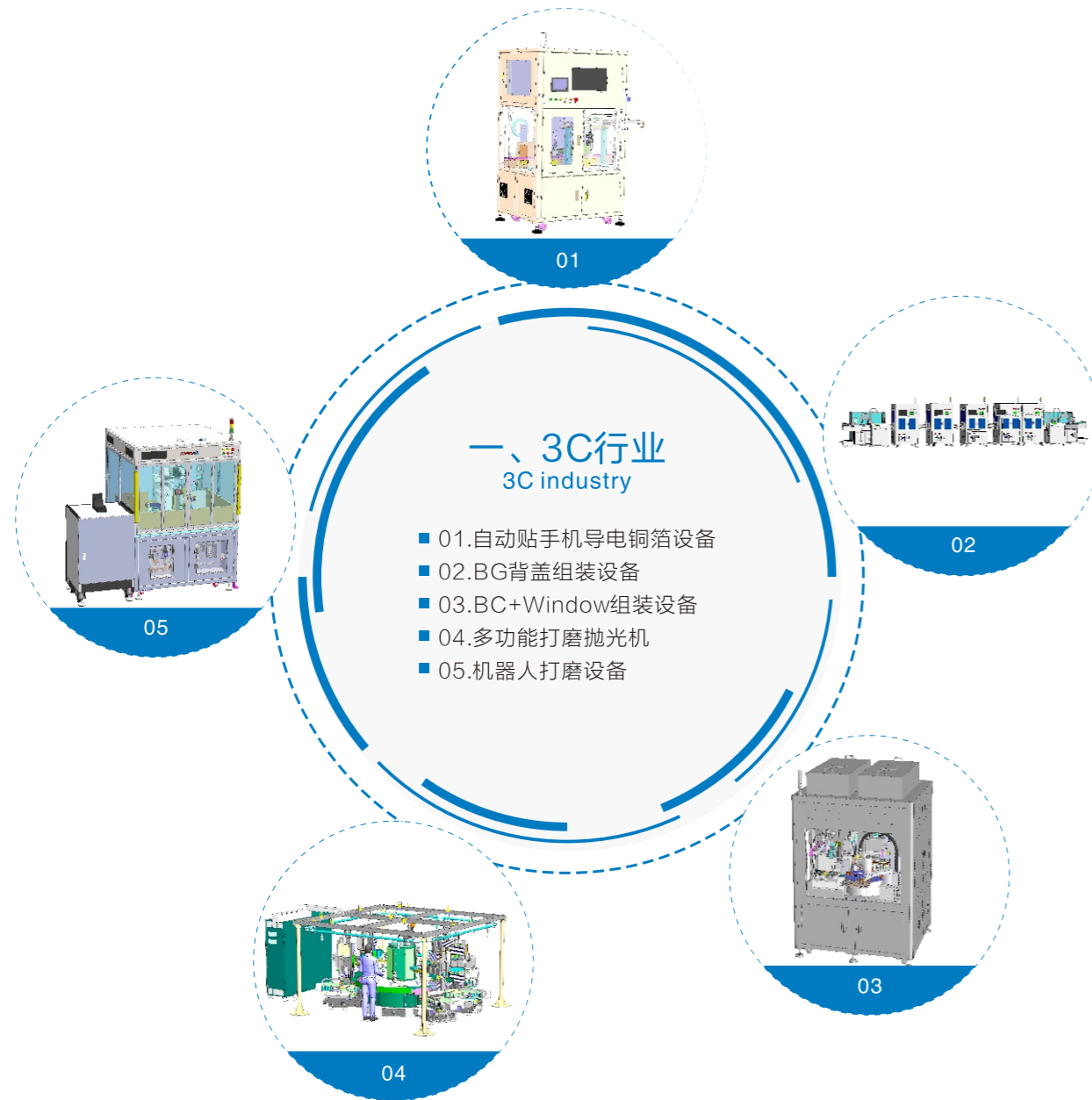
应用案例 Application Case



自动化篇 Automation Project

根据客户需求定制
Customized according to customer requirements

拓斯达是国内首个提出做“通用型”“开放型”“可升级”“可复制”的自动化设计理念，提供多关节、平面机器人/非标机械手应用、自动化解决方案。
Topstar is the first proposed in domestic to do "universal" "open" "upgradable" "replicable" automation design concept, provide multi-joint robot, scara robot / non-standard robot applications, automation solutions.



01. Automatically attach mobile phone conductive copper foil equipment
02.BG back cover assembly equipment

03.BC+Window assembly equipment
04. Multi-function polishing machine
05. Robot polishing equipment



01. Photovoltaic butyl tape equipment
02. Photovoltaic copper wire laminating equipment
03. Lithium battery OCV test equipment

04. Lithium battery cell body glue applicator
05. Soft package automatic packaging line
06. Soft pack battery injecting machine



01. Glass Tray disk to strengthen the rack equipment
02. DEPUTE carving machine automatic feeding system
03. Glass cleaning rack to strengthen the rack equipment

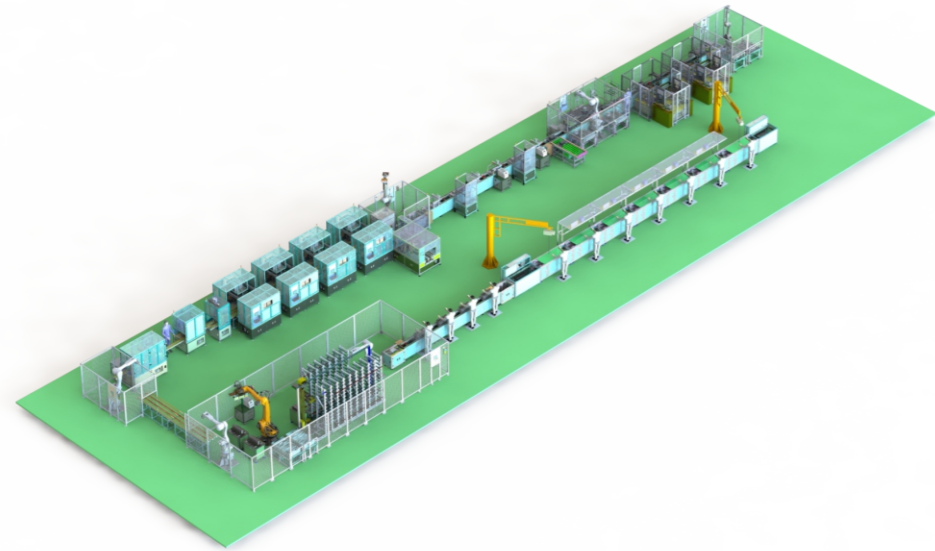
04. Glass thickness inspection sorter
05. CG glass intelligent inspection production line
06. Guangchi coating equipment



01. Medical Industry Packaging Automation
02. Food Industry Packaging Automation
03. Daily Necessities Industry Packaging

04. 3C Electronics Industry Packaging
05. AGV Logistics Transportation
06. Belt Conveyor and Roller Transport Line

一、圆柱电池模组组装&PACK总装概览 Cylindrical battery module assembly & PACK assembly overview



◆线体描述:

可实现18650, 21700, 26650的等各种圆柱电芯的兼容性生产, 针对18650的特性进行全方位设计, 实现单工位、单工站、可分离、可快速实现整线的工序增减, 通过夹具换型, 一键电控改变抓手间距的方式实现多种电芯间的切换, 可实现一线多用, 一条线可满足客户协议范围内几乎所有电芯的生产兼容。

◆产能: 10PPM-20PPM (模组), 视模组大小而定。
一次性通过率 ≥ 99%, 稼动率 ≥ 95%

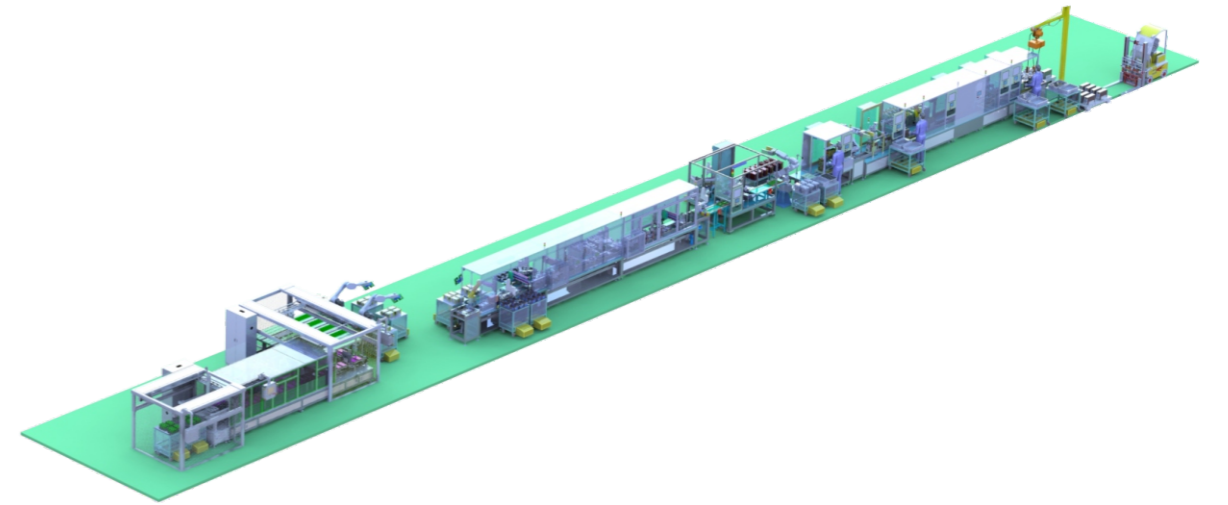
◆Production Line description:

It can realize the compatibility production of various cylindrical batteries such as 18650, 21700, 26650, and comprehensively design for the characteristics of 18650, realize single-station, single-station, separable, and can quickly increase or decrease the process of the whole line. Through the change of the fixture, the one-button electronic control changes the gripping distance to realize the switching between various batteries, which can realize multi-purpose one-line, one line can meet the production compatibility of almost all the batteries in the customer agreement range.

◆Capacity: 10PPM-20PPM (module), depending on the size of the module
One-time pass rate ≥ 99%, graft rate ≥ 95%

项目 Project	类型 Type
设备包含工位 Equipment contains stations	下壳体自动上料工站、电芯分选入壳工站、电芯自动入壳体工站、自动压合上盖工站、NG维修工站、模组翻转工站、螺丝锁付工站、模组表面清洗工站、镍片焊接工站、CCD检测工站 The lower shell is automatically loaded into the station, the batteries are sorted into the shell station, the batteries are automatically inserted into the shell station, the upper cover station is automatically pressed, the NG repair station, the module is turned over, and the screw lock is paid. Station, module surface cleaning station, nickel sheet welding station, CCD inspection station
标准件品牌供应商 Standard parts brand supplier	ABB、OMRON、Schneider、Panasonic、Siemens
兼容性 compatibility	圆柱电池 Cylindrical battery: 18650、21700、26650
设备尺寸 Equipment size	45m × 12m × 2.4m

二、软包电池模组组装&PACK总装概览 Soft pack battery module assembly & PACK final assembly overview



◆线体描述:

可实现目前市场上的主流的软包电芯模组组装工作以及后续PACK的组装工作, 针对于目前模组组装工序变化较大且经常性更换的现状, 我们制作的每个工站之间相互独立, 可实现产线无缝拼接, 工序变动单工站时间 ≤ 4H, 另外产线可根据客户要求兼容一定范围内的电芯。

◆产能: 10PPM-20PPM, 视电芯大小而定。
一次性通过率 ≥ 99%, 稼动率 ≥ 95%。

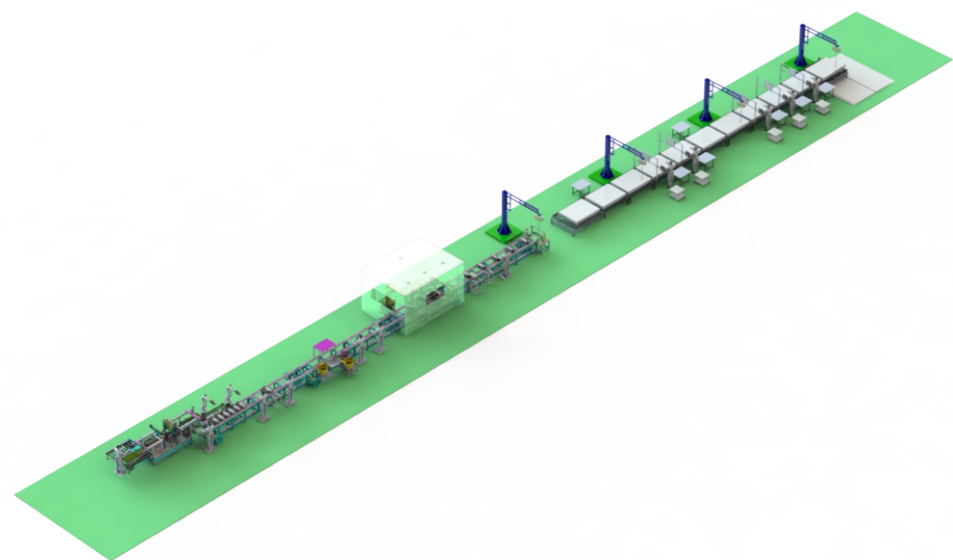
◆Production Line description:

It can realize the assembly work of the mainstream soft pack battery module and the subsequent PACK assembly work on the market. For the current situation that the module assembly process changes greatly and is frequently replaced, each station we make is mutually independent, the production line can be seamlessly spliced, the process change simple station time ≤ 4H, and the production line can be compatible with a certain range of batteries according to customer requirements.

◆Capacity: 10PPM-20PPM, depending on cell size
One-time pass rate ≥ 99%, graft rate ≥ 95%

项目	类型
设备主要工站 Main station of the equipments	测试测试分选工站: 电芯扫码、极耳整形、OCV检测、极耳裁切、清洗、电芯分选; 最小单元组装工站: 电芯入夹具、支架打码入夹具、扣板安装、涂胶工站、散热板安装、涂胶、影像检测; 模块堆叠及装配工站: 模块堆叠、绝缘板安装、固定杆安装、极耳折弯、固定杆检测、模块下料、模组堆叠及螺母预装、自动打螺栓、模组下料; 模组堆叠及装配测试工站: 极耳焊接、极耳检测、连接片安装、连接片焊接、连接片检测、EOL检测; Test sorting station: cell scan code, ear shaping, OCV detection, tab cutting, cleaning, cell sorting; Minimum unit assembly station: battery core into fixture, bracket coded into fixture, gusset plate installation, glue station, heat sink installation, glue application, image inspection; Module stacking and assembly test station: tab welding, tab inspection, EOL inspection;
标准件品牌供应商 Standard parts brand supplier	ABB、OMRON、Schneider、Panasonic、Siemens
兼容性 compatibility	圆柱电池 Cylindrical battery : 18650、21700、26650
设备尺寸 Equipment size	47m × 5.5m × 2.2m

三、方形铝壳电池模组组装&PCAK总装概览 square aluminum shell battery module assembly & PCAK final assembly overview



◆线体描述:

可实现目前市场上的方形铝壳电池模组组装工作以及后续PACK的组装工作，设备设计可根据客户需求进行定制，可满足一定尺寸范围内的电芯的相关模组组装工作。整线具备数据采集、数据分析、过程追溯功能。所有螺丝批附带锁付扭力记录，可从后台直接观测到整线运行状况，及时发现不良点并进入统计数据，作为改良工序的大数据资料。可通过替换部分夹具部件以及屏蔽部分功能的方式实现快速换线转产。

◆产能: 10PPM-15PPM,视电芯大小而定
一次性通过率 ≥ 99% ,稼动率 ≥ 95%

◆Production Line description:

It can realize the assembly work of the square aluminum shell battery module on the market and the assembly work of the subsequent PACK. The equipment design can be customized according to the customer's requirements, and can meet the assembly work of the relevant modules of the battery core within a certain size range. The entire line has data collection, data analysis, and process traceability. All screwdrivers are equipped with lock torque records, which can directly observe the whole line running status from the background, find bad points in time and enter statistical data as big data for improving the process. Quick line change can be achieved by replacing some of the fixture components and shielding the function of the part.

◆Capacity: 10PPM-15PPM, depending on cell size
One-time pass rate ≥ 99%, graft rate ≥ 95%

项目	类型
设备主要工站 Main station of the equipments	自动扫码工站、激光测高工站、电压内阻测试工站、激光极柱清洗工站、离子风除尘工站、包胶贴胶工站、除尘涂胶工站、极性检测工站、模组堆叠工站、模组锁付工站、Busbar锁付上料工站、DCIR测试工站、模组返修工站。 Automatic scan code station, laser height measuring station, voltage internal resistance test station, laser pole cleaning station, ion wind dust removal station, rubberized glue station, dust removal coating station, polarity inspection station, module stacking station, module lock paying station, Busbar lock paying station, DCIR test station, module repair station.
标准件品牌供应商 Standard parts brand supplier	ABB、OMRON、Schneider、Panasonic、Siemens
兼容性 compatibility	铝壳动力电池模组 Aluminum shell power battery module
设备尺寸 Equipment size	33m × 4m × 4.5m

汽车饰件篇

Vehicle Accessories

根据客户需求定制

Customized according to customer requirements

项目介绍 Project Introduction

汽车饰件设备集成商（设备解决工艺范围）

Auto parts equipment integrator (scope of equipment to solve the processing technology)

- | | | | |
|-------------------------------------|--|-----------------------------|---|
| ■ 超声波焊接
Ultrasonic welding | ■ 热铆焊接
Hot riveting welding | ■ 热板焊接
Hot plate welding | ■ 震动摩擦焊接机
Vibration Friction Welding Machine |
| ■ 铣削处理
Milling processing | ■ 自动包边包袱
Automatic wrapping | ■ 机器人涂胶
Robot Glue | ■ 自动打螺丝
Automatic screwing |
| ■ 自动装卡扣
Automatic loading buckle | ■ 自动贴标签扫码
Automatic labeling and scanning | ■ 红外焊接
Infrared Welding | ■ 数据采集系统
Data Acquisition System |
| ■ 顶棚压合
Ceiling Pressing | ■ 冲孔冲切
Punching | ■ 激光焊接
Laser Welding | ■ 喷涂线体
Spray Line Body |

服务产品系列 Application product line

内饰件产品：门板、仪表板、中央通道、后尾箱、立柱、手套箱、顶棚、衣帽架等；
Interior trim products: door panel, dashboard, center channel, rear cabinet, pillar, glove box, ceiling, coat rack, etc.

外饰件产品：前后保险杠、扰流板、轮罩、前后车灯等
Exterior trim products: front and rear bumper, spoiler, wheel cover, front and rear lights, etc.



门板解决工艺 Door Panel Solution

注塑取件自动化——焊接——包覆——装卡扣——打螺丝
Injection Molding Automation - Welding - Cladding - Loading Buckles - Screwing



仪表板解决工艺 Dashboard Resolution Process

注塑取件自动化——火焰处理——震动焊(红外)
——超声焊——装配
Injection Molding Parts Automation -- Flame Processing --
Vibration Welding (infrared) -- Ultrasonic Welding -- Assembly

保险杠解决工艺 Bumper Process Solution

注塑——喷涂——焊接——冲孔——装配
Injection Molding - Spraying - Welding - Punching - Assembly



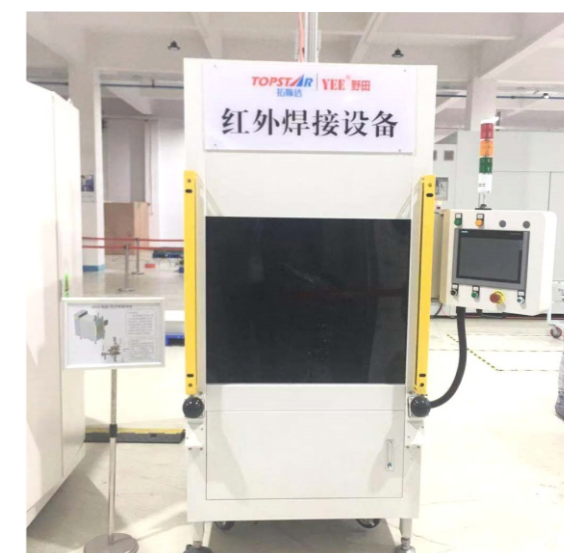
尾门解决工艺 Tailgate Solution

注塑取件——喷涂——焊接——冲孔——装配
Injection Molding - Spraying - Welding - Punching - Assembly



顶棚解决工艺 Ceiling Solution

自动上料——湿法——干法——复合切割——压着翻边
——检测——安装
Automatic Feeding - Wet Method - Dry Method - Composite Cutting -
Pressing & Flanging - Inspection - Installation



车灯解决工艺 Car Light Solution Process

注塑——热板(红外)——震动焊——激光焊——喷涂
Injection Molding - Hot Plate (infrared) - Vibration Welding - Laser Welding -
Spraying

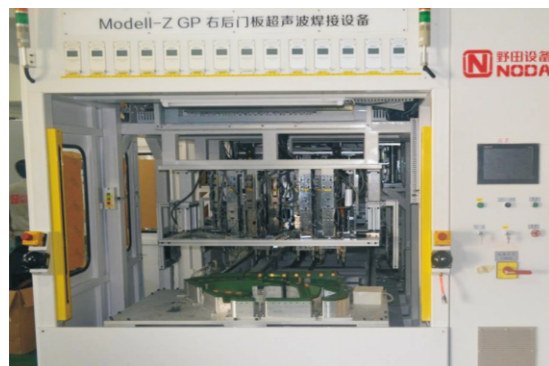


喷涂线体解决工艺 Spray Line Body Solution Process

火焰处理——喷底漆——色漆固化——喷色漆——冷却
——面漆流平
Flame Treatment -- Spray Primer -- Paint Curing -- Spray Paint -- Cooling --
Top Paint Leveling

应用案例 Application Case

汽车门板焊接机系列 Car door welding machine series



上海大众帕萨特门板焊接机
Shanghai Volkswagen Passat model door welding machine



一汽奥迪Q5门板焊接机
FAW Audi Q5 model door welding machine

汽车仪表板焊接机系列 Car dashboard welding machine series

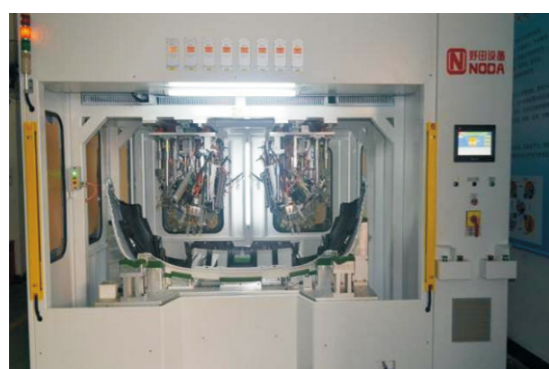


上海大众 途昂仪表板焊接机
Shanghai Volkswagen Touran model dashboard
welding machine



上海大众朗逸仪表板焊接机
Shanghai Volkswagen Laidia model instrument panel
welding machine

汽车保险杠焊接机系列 Car bumper welding machine series



长城H6前保险杠焊接机
Great Wall H6 model front bumper welding machine



江铃福特E33车型冲焊一体机
Jiangling Ford E33 model punching and welding machine

绿能项目篇

Green Energy Project

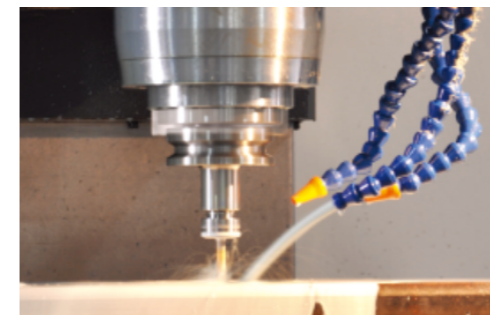
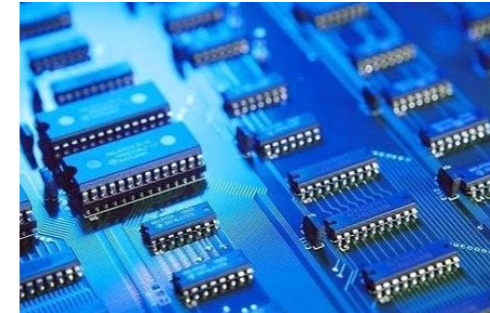
根据客户需求定制
Customized according to customer requirements

资质证书 Qualification Certificate



业务领域 Business area

- 集成电路板/ Integrated circuit board
- 平板显示及玻璃加工行业/ Panel display and glass processing industry
- 食品制药行业/ Food and pharmaceutical industry
- 新能源行业/ New energy industry
- 医疗卫生行业/ Medical and health industry
- 数据中心/ Databank
- 金属加工行业/ Metal processing industry
- 成型加工行业/ Molding processing industry



客户代表 Customer Representative



标准产品

集成方案

整厂解决方案

标准产品

集成方案

整厂解决方案

绿能无人车间示意图
Fully-Automatic Workshop Diagram with Green-energy System



储料仓/ Material Storage Tank
 钢结构平台/ Steel Structure Platform
 粉碎/计量/除湿/干燥系统
 Granulating/Dosing/Dehumidifying/Drying System
 正压输送/ Blowing Air Conveying
 负压输送/ Vacuum Conveying
 电力系统/ Power System

空压系统
Compressed Air System
 冷冻水系统
Chilling Water System
 冷却水系统
Cooling Water System

产品输送线
Production Conveying Line

洁净室
Clean Room

服务内容 Service Content

前期/Early Stage

工程咨询/Project Consulting
 功能设计/Function Design
 初步设计/Pre-design
 工程预算/Project Budget
 改善方案/Design Optimization
 完善实施/Construction Optimization

规划/Planning

工艺设计/Process Design
 施工设计/Construction Design
 BIM设计/BIM Design
 BOM编制/BOM Sheet
 施工安排/Construction Arrangement
 施工方案/Construction Scheme

实施/Construction

现场设计/Construction Site Design
 材料采购/Material Parts Purchasing
 生产制造/Manufacturing
 现场施工/Construction
 施工管理/Construction Management
 系统调试/System Debugging

运行/Running

教育培训/Training
 系统档案/System Files
 运行优化/Running Optimization
 系统维护/System Maintenance
 维修保养/Repairing & Maintenance
 管理优化/Management Optimization

标准产品

集成方案

整厂解决方案

标准产品

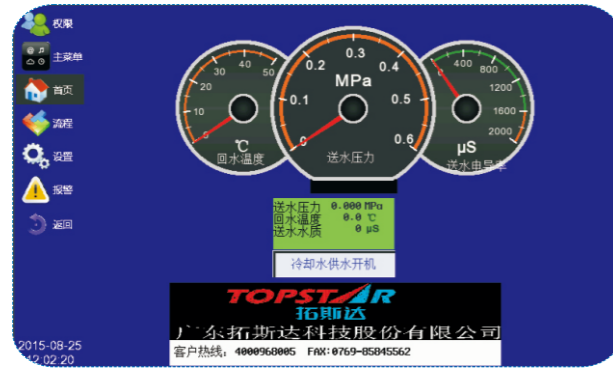
集成方案

整厂解决方案

中央集中控制系统 Centralized control system

将全车间机电设备通过各种传感器进行信号采集，集中至PLC进行运算，按照工艺需求设定并反馈信号控制设备运转，起到系统保护、集中监控、远程操作、优化运行于一体的综合性功能。

Through a variety of sensors to collect signal of the mechanical and electrical equipment in the whole plant, then centralized to the PLC to operate, set the steps according to the demands and send a signal to control the device to run. Have the integrated function of system protection, centralized monitoring, remote operation, optimize the operation.



中央控制系统
Central control system



工艺冷冻水
Processing Chilling Water



常温冷却水
Normal Temperature Cooling Water



动力泵组
Power Pump



空压系统
Air Compressor System



低压配电
Low-voltage Distribution



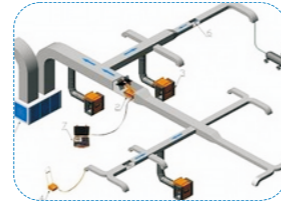
车间管路
Workshop Pipeline



无尘车间
Clean Room



水处理系统
Water Treatment System

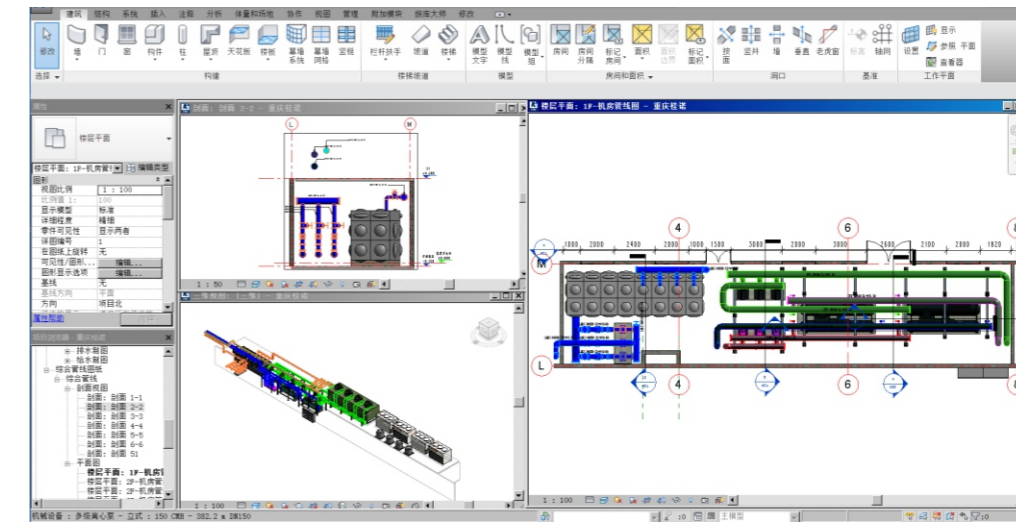


中央空调
Central Air Conditioner

BIM技术应用 BIM Technology Application

公司BIM技术中心在BIM模型的搭建、借助BIM软件对施工图纸进行深化设计,检测管线碰撞以及辅助现场安装施工等方面都有着丰富的实战经验,并将BIM技术应用到大型项目的过程实施管理当中,如辅助材料统计管理、成本预测、施工模拟和方案的确定、预制件的加工等,为项目品质的提升起到了积极的作用。

BIM technology center has rich practical experience in building the BIM model, using BIM software to optimize the construction drawings, detecting pipeline interference and assisting in site installation and construction. BIM technology has been applied to the implementation of large-scale project management, such as auxiliary material statistical management, cost budgeting, construction simulation and program identification, prefabricated processing. The quality of the project has been greatly improved.

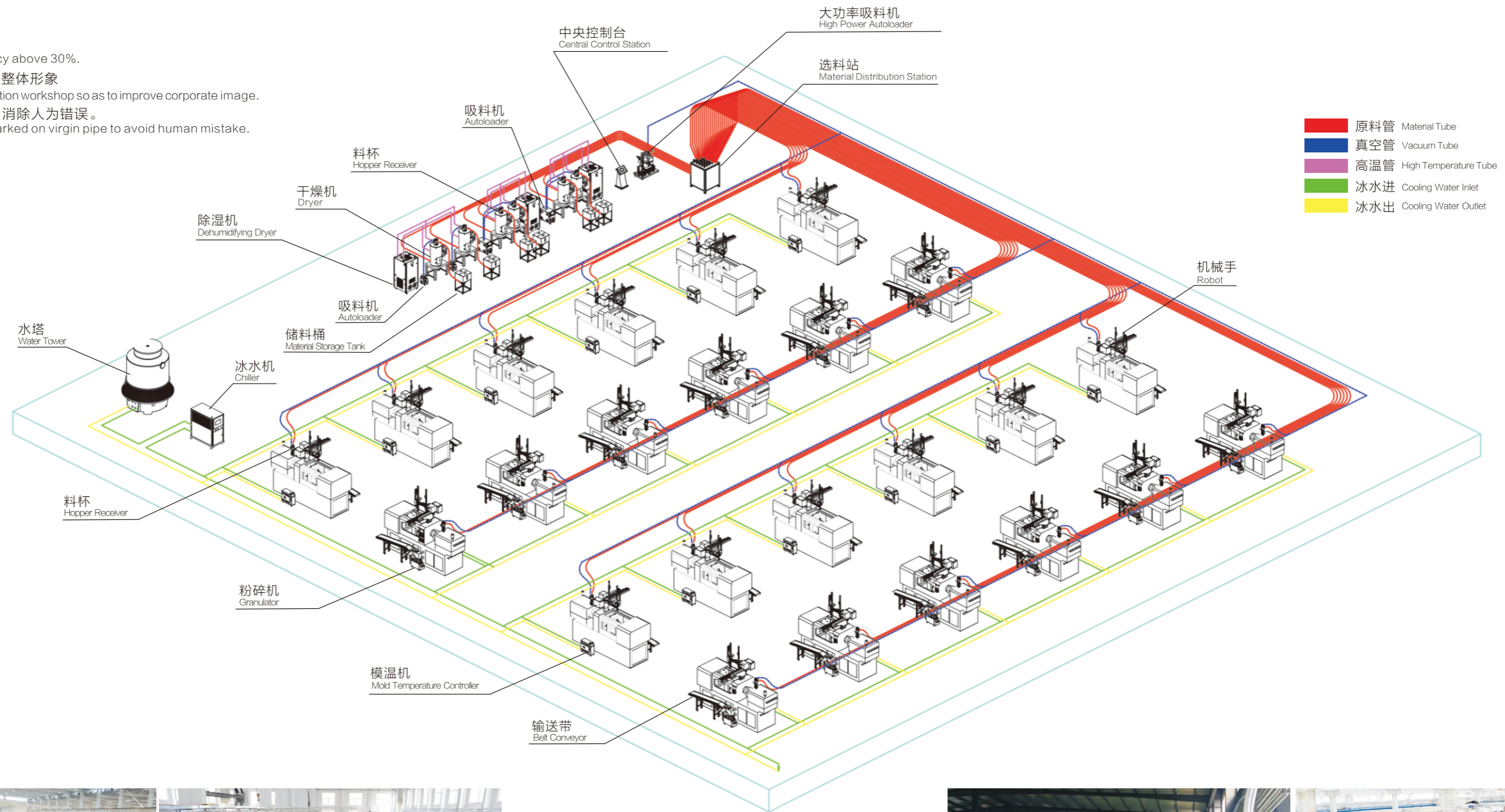


应用案例 Application Case



中央供料系统 Material Centralized Feeding System

- 节约能源50%
Saving energy up to 50%.
- 节省人工成本60%以上
Saving labor above 60%.
- 提高生产效率30%以上
Improving production efficiency above 30%.
- 保持工厂环境整洁提升公司整体形象
Keep tidy environment in production workshop so as to improve corporate image.
- 通过PLC与原料管的标示, 消除人为错误。
Symbol shown on PLC and marked on virgin pipe to avoid human mistake.





工厂能数据显示平台

Factory Intelligent Data Display Platform

生产数据监控、能源数据管理、质量实时监控、自动生成报表，可与MES、ERP等实现数据对接。
Production Data Monitoring, Energy Data Management, Quality Real-time Monitoring, Automatic Generation of Reports, can be connected with MES, ERP, etc.

拓斯达智能物联网

TOPSTAR Intelligent Internet of Things

传感器采集接口通用化
Sensor Acquisition Interface Generalization

数据传送协议标准化
Data Transfer Protocol Standardization

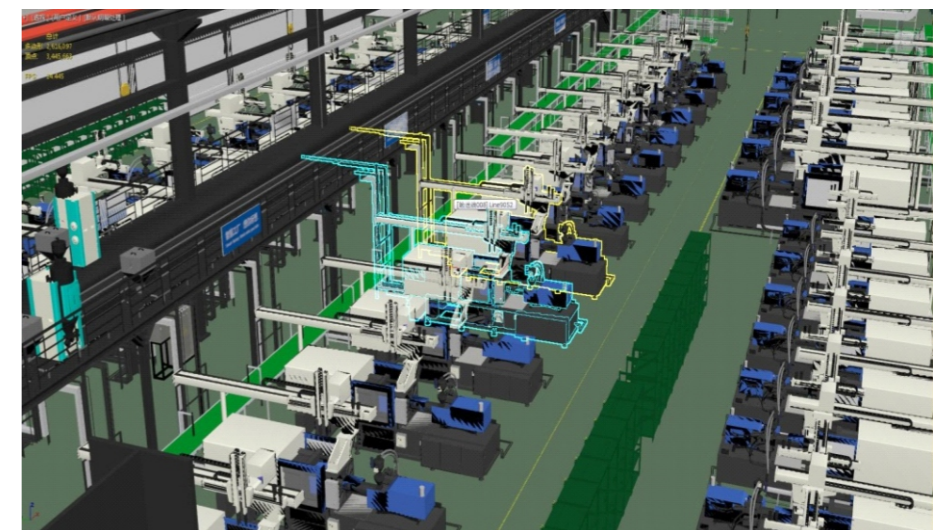
整厂设备智能控制
Whole Plant Equipment Intelligent Control

大数据融合
Big Data Fusion

应用范畴

Application Fields

工厂生产；仓储物流；智能建筑；能源供给；医院教育等。
Factory Production; Warehousing Logistics; Intelligent Building; Energy Supply; Hospital Education, etc.



VR模式巡视工厂设备

Inspection Factory Equipment with VR

建立3D厂房模型，直观反映设备状态及其生产状况，方便安排生产计划、设备维护。
Set up 3D plant model to directly reflect the equipment status & production status, and facilitate the arrangement of production plan & equipment maintenance.

智能联网终端

Intelligent networking terminal



GPS数据网关GPS data gateway

- 带RS485/RS232通信接口
RS485/RS232 communication interface
- 带GPRS远程通信功能
GPRS remote communication function
- 带蓝牙4.0通信功能
Bluetooth 4.0 communication function
- 带Zigbee自组网功能
Zigbee Ad Hoc network function

开放接口，提供二次开发包
Open interface, to provide secondary development package



4G数据网关4G data gateway

- 带Zigbee组网通信功能
Zigbee networking communication function
- 带4G全网通、高速数据传输
4G full Netcom, high-speed data transmission
- 工业级设计、性能可靠
Industrial design, reliable performance
- 防水防尘、可户外安装
Waterproof and dustproof, outdoor installation

开放接口，提供二次开发包
Open interface, to provide secondary development package



智能手持终端Intelligent handheld terminal

- 工业级设计/性价比高
Industrial design, Cost-effective
- 运行Android 5.1操作系统
Run Android 5.1 OS
- 一维/二维条码扫描
One-dimensional code scan/QR code scan
- RFID读写/摄像头
RFID read/write/output / camera
- GPS/北斗定位
GPS/Beidou positioning
- 蓝牙/WiFi/4G全网通
Bluetooth /wifi /4G full Netcom

可定制开发工业APP
Customizable development industry APP



智能工业平板Intelligent networking terminal

- 安卓6.0系统
Android 6.0 OS
- NFC功能/陀螺仪/重力感应
NFC function / gyroscope / gravity sensing
- GPS/北斗定位系统
GPS/Beidou positioning system
- 蓝牙/WiFi/4G全网通
Bluetooth /wifi /4G full Netcom
- 防水防尘等级IP67, 防摔防震
Waterproof and dustproof grade IP67, drop and shock proof

可定制开发工业APP
Customizable development industry APP

客户服务篇

Chapter of Service

全心全意为客户服务
Serve customers wholeheartedly.

达云在线-量身打造企业自动化解决方案 DaYun online-Tailored to build enterprise automation solutions

达云在线是拓斯达科技于2015年推出的基于微信的移动端自动化咨询平台。通过关注拓斯达科技公众号，就可以随时随地观看近百家企业自动化应用生产线，涵盖塑胶、五金、装配等几十种行业工艺实际案例。

Da Yun Online is a mobile-side automation consulting platform based on WeChat launched in 2015 by TOPSTAR. You can follow the "topstarltd" wechat official accounts. To watch video about the automated production line in nearly 100 enterprises at any time, include plastic, metal, assembly and other dozens of industries.



关注微信拓斯达科技公众号，点击下方菜单栏“谈方案”或“看案例”，即可进入达云在线平台。

Follow the "topstarltd" wechat official account, click on the bottom of the menu bar "talk about the program" or "see the case", you can enter the DaYun online platform.

达云在线的功能 The functions of DaYun online

- 1.直接回复公众号，即可直接与专家交流咨询，洽谈方案；
Reply to the official accounts, you can directly communicate with experts and negotiate program.
- 2.随时查看适合自己需求的自动化案例视频；
View automated case video workable for you.
- 3.方便用于分享，多人同时观看；
Easy to share the video, many people watch online at the same time.
- 4.查看最全面的产品资料；
View the most comprehensive product information.

达云在线的便利 DaYun Online convenience

- 1.点开微信问专家 Consult with experts in Wechat.
在线自动化工程师是由多年方案设计和工艺经验，以及成熟案例的专家组成，给您最实用，最可靠的方案建议；
Customer service engineers have rich experience in program design and technological process. Give you the most practical and reliable solution.
- 2.拿出手机，走进上百家企业车间考察 Investigate workshop in hundreds of enterprises through the video.
在视频中心可轻松查看近百家车间自动化生产线现场视频，最真实的应用案例对比借鉴，轻松解决预约客户上门观看的诸多不便和往返时间成本，迅速高效了解项目功能；
Easy to view the automation production line in hundreds of enterprises, compare with the most real case, solve the problem about long distances to visit, save the time and efficient understand Project function.
- 3.各种工艺自动化都能找到借鉴 You can find various samples about automation solutions.
无论您是注塑、压铸、冲压、组装、喷涂、精雕、CNC上下料、打磨抛光等的代工序，还是整厂自动化解决方案，都能在达云在线找到合适的项目视频和专家解答；
Can find the proper video and expert solution in the DaYun online, include different procedure such as injection molding, die casting, stamping, assembly, spraying, carved, CNC loading unloading, polishing, whole plant automation solution and so on.
- 4.一部拓斯达产品资料库 E-catalog of TOPSTAR product.
除了解决方案和视频，您还可以通过达云在线全面了解需要的相关设备，免去搜索和画册等渠道信息不全的痛苦。
Except the video and solutions, you can also get a comprehensive understanding of the necessary equipment through the DaYun online. Do not need to search on the Internet or read the album.

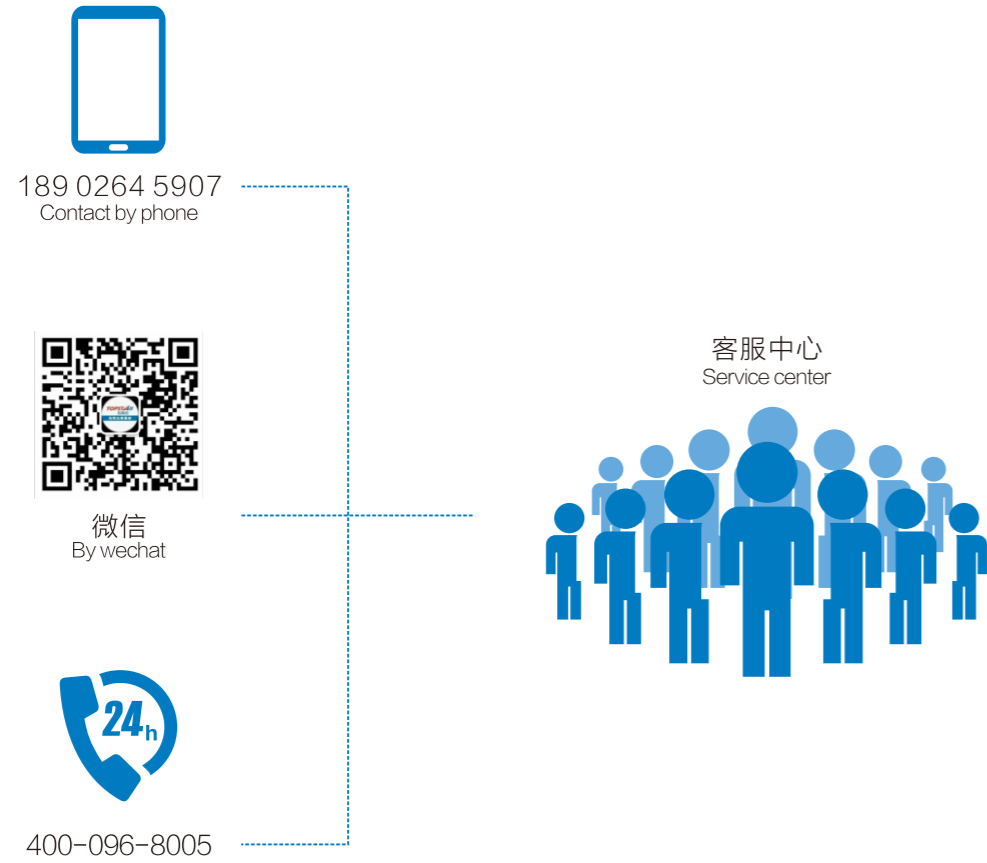
如何访问达云在线? How to access Da Yun Online?

您可以通过以下任何渠道进入达云在线观看、分享、咨询。
You can access the DayYun online to watch the video, share the moment, and consult with experts through following channels.

- 1.通过微信公众号搜索“拓斯达科技”，关注并打开公众号界面，通过底部菜单栏选择洽谈或观看！
Research the Wechat official accounts "topstarltd", follow and enter, through the bottom menu bar to choose to consult with experts or watch the video.
- 2.通过微信公众号搜索“robotinside”，关注并打开公众号界面，通过底部菜单栏选择洽谈或观看！
Research the Wechat official accounts "robotinside", follow and enter, through the bottom menu bar to choose to consult with experts or watch the video.
- 3.通过PC端访问拓斯达科技官网www.topstarltd.com也可进入达云在线PC端洽谈和观看。
Browser our website "www.topstarltd.com", you can also enter the cloud online PC side to consult with experts or watch the video.

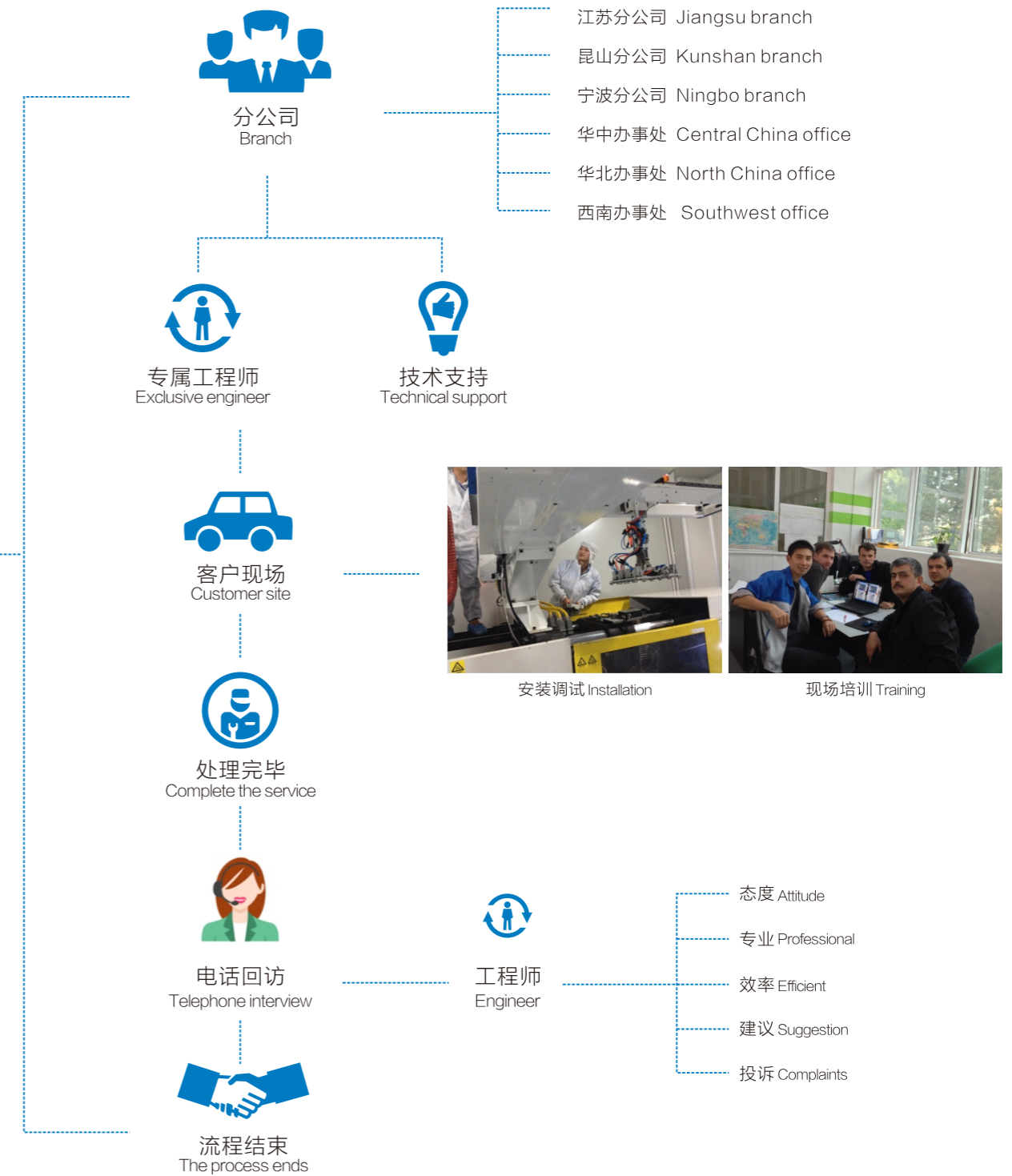
售后服务 After-Sale Service

客户服务流程图 Customer Service Flow Chart



对于传统设备供应商将重点放在业务推销和质量管控而言，对于售后服务的重视是拓斯达公司深入人心的又一大亮点。

Traditional equipment suppliers will place their focus on business promotion and quality management and control. However, TOPSTAR attaches much importance to after-sales services, which is another highlight for the company to win public support.





售后服务 After-Sale Service

我们率先提出了“主动服务”的概念。

不再满足于被动维修的快捷，我们专门设立了售后服务电话回访制度，对售后服务的满意度全程追踪，同时我们建立了季度巡检和年度检修制度。主动帮助客户保养设备并找出需要改善的方面，然后协同研发部找出对策，使产品不断趋于完善。

We have initially proposed the concept of “Active Service”.

We are no longer satisfied about the quickness of passive repair. Therefore, we have specifically established an after-sales service telephone return visit system to conduct full-journey tracking of the satisfaction of after-sales services. Meanwhile, we have established a quarterly routing inspection and annual overhaul system to proactively help customers maintain the equipment and find places to improve. Then, we coordinate with R&D department to find relevant countermeasures to continuously perfect the products.

衷心感谢 Sincerely Appreciate



比亚迪



海尔



汉能



康佳



TCL



五菱



台达



欣旺达



捷普绿点



安费诺



莫仕



长盈精密



裕同



精研



铭祥汽车



正崧



立讯



兴科集团



华众



长城汽车



伯恩光学

.....

超过5000家客户鉴证并长期支持
Over 5000 customers have witnessed TOPSTAR growth and long supports

全球服务网点 Global Service Net

